



## What is a Special Purpose Acquisition Company (pre-acquisition) (SPAC)?

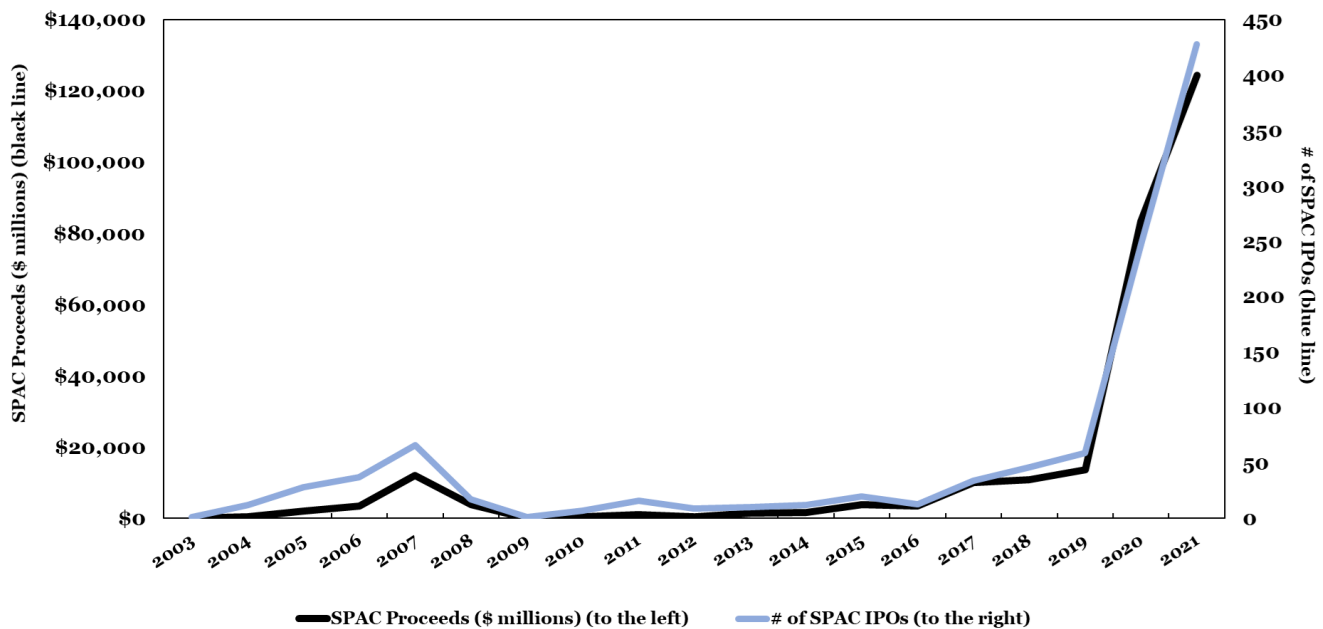
SPACs are publicly listed companies whose management teams raise money at an initial public offering (IPO) and generally have 12 to 24 months to find a target company to acquire. Proceeds from a SPAC's IPO must be deposited into a trust account and invested in Treasury bills or government money market funds, while the SPAC's management team seeks an appropriate acquisition. The trust account is monitored by a third party entity and generally cannot be used for anything other than the acquisition of a company.

The proceeds of the trust are not released until the earliest of:

1. the completion of the initial business combination,
2. the redemption of any shares in connection with a shareholder vote, or
3. the redemption of shares at the end of the stated term if the SPAC is unable to complete a business combination.

New issuance for SPACs has grown significantly over the last few years. As shown in the chart below there are 452 SPACs seeking acquisition, with IPO proceeds greater than \$133 billion. So far in 2021, SPACs are approximately 63% of the total number of U.S. IPOs.

**Special Purpose Acquisition Company (pre-acquisition)  
Initial Public Offerings**  
(2003 - 2021\*)



\*SPAC Analytics, <https://www.spacanalytics.com>, data as of 9/15/2021

## Why do we like SPACs?

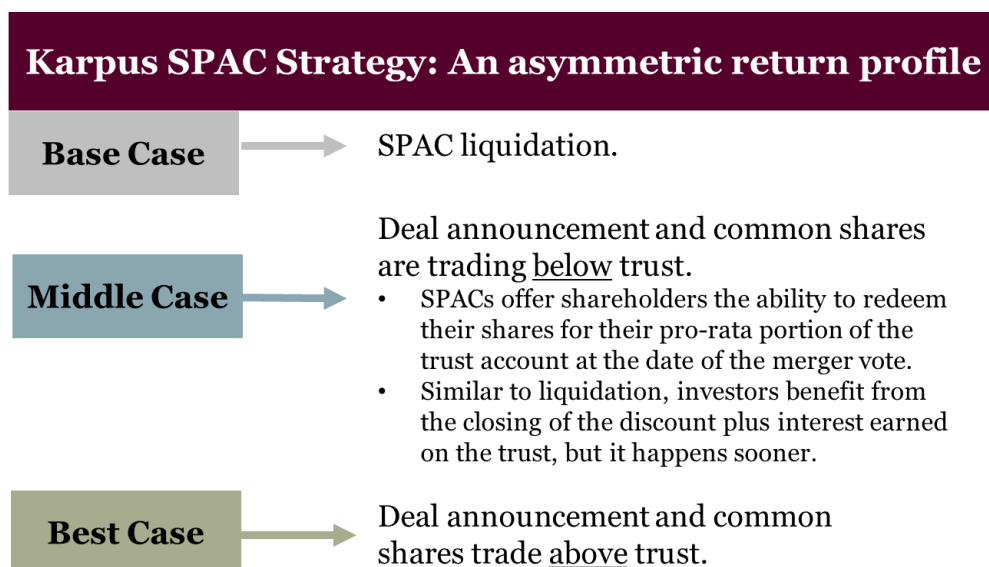
SPAC securities can be:

1. Units
  - Can be separated into their individual components (e.g., warrants, rights, and common shares).
  - Can be traded above or below the value of the trust.
2. Common shares
  - A SPAC's common shareholders are the stakeholders with a claim to the trust account.
  - Can be traded above or below the value of the trust.

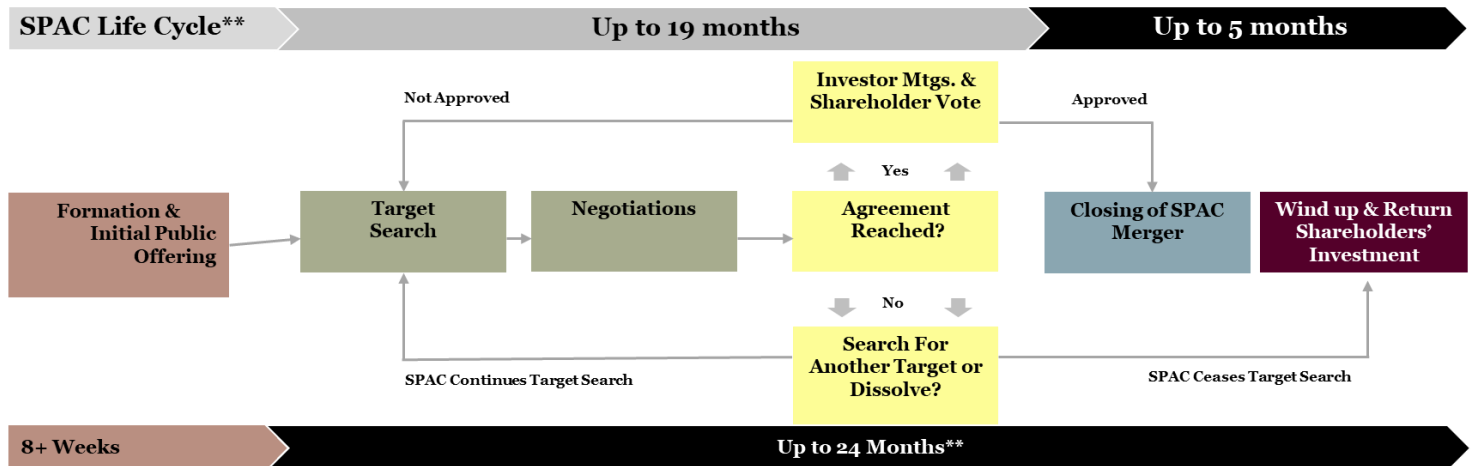
After the IPO, shares of a SPAC trade on an exchange (e.g., NYSE, Nasdaq). This means that SPACs can trade at a premium or a discount to the value of the trust account.

Through our analysis, we are able to identify the trust value per share at a SPAC's IPO. Since the trust is invested in short-term U.S. Treasury bills or government money market funds, we can also calculate how much the trust may earn in interest over the life of the SPAC. Summing the initial value and the estimated potential interest earned, we are able to estimate the future value of the trust at the end of the stated term.

Our investment objective is to buy SPACs at a discount to the estimated future value of the trust. This allows us to estimate a "floor" return that can be achieved by holding a SPAC to its stated liquidation date. We view SPACs as buying cash at a discount.



## Typical SPAC timeline



\*For illustrative purposes only. The SPAC lifecycle presented is based on a 24 month timeline to complete a merger. Source: <https://www.pwc.com/us/en/services/audit-assurance/accounting-advisory/spac-merger.html>

## How do SPACs fit in our clients' portfolios?

1. We focus on investing in SPACs pre-acquisition through what we believe is a conservative approach.
2. Our goal is to maximize returns while minimizing risk. One of the steps we take to do this is to establish pre-determined sale levels at or above trust.
3. We believe SPACs are a fixed income alternative with low duration risk and significant safety of principal.
4. SPACs also have the upside potential of equities if a potential deal is well-received by the market.

To be sure, there are many things investors in SPACs must analyze before and during the length of their investment. Like any other investment, knowing the ins and outs of SPACs is critically important to avoid pitfalls. We feel that our team's experience with investing in SPACs, combined with market conditions of elevated equity valuations and low fixed income yields, warrants utilization of SPACs as a component of investors' overall portfolios.

To learn more about how we invest in SPACs or if they can be a compliment to your overall strategy, please contact us to see how we can help.

*The opinions and analysis expressed in this newsletter are those of Karpus Investment Management staff, are subject to change based on evolving market and economic conditions. All Karpus composite performance results and associated disclosures are available upon request. Past performance is not a guarantee of future performance. During periods of market volatility, the data provided will fluctuate according to the degree of volatility. All investments involve risk, including possible loss of principal.*